

Lorida Country Estates Private Community



Nice large homesites



Beautiful pasture land



Horses welcome

Acres: 10.19 +/- acre Ranchette

Price: **NEW PRICING \$130,000**

Location:

Lorida Country Estates
Close to Arbuckle Creek Road and Scrubpens Road
819 Dachshund Road
Sebring, Florida, Highlands County

Current Use: 10 Acre Ranchette

**10 Acre
Ranchette in
Sebring!**

Water/Utilities: Well; septic

Directions:

- Take US 27 and turn east on Hwy 98
- Go 10.5 miles to Arbuckle Creek Road
- Turn left and continue 2.3 miles to Scrubpens Road
- Turn right on Scrubpens Road and go 3.2 miles
- Property is on the left. Look for signs

S.T.R.: 24-34-30

Parcel ID: C-24-34-30-010-0000-0280

*This private community
is close to lakes, horse
trails and golf courses*

*There are minimal
deed restrictions*

**10.19 +/- Acres
Owner offers up to
90% financing**



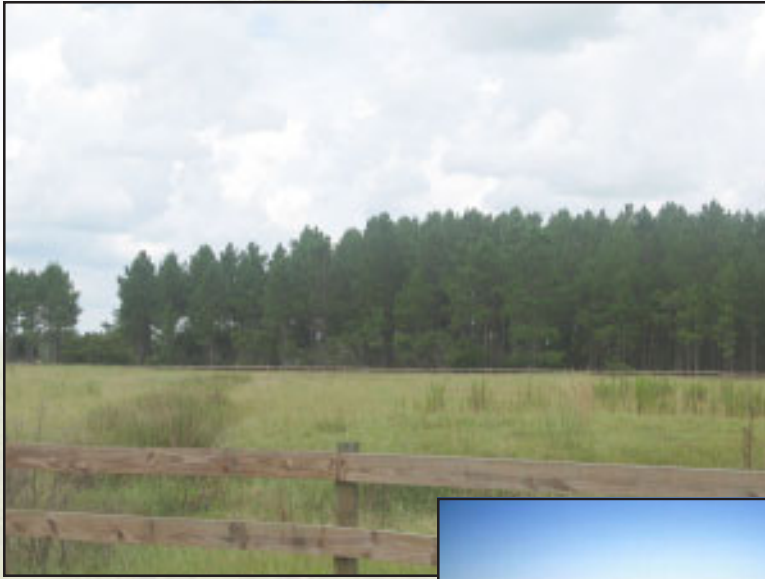
**SAUNDERS
REAL ESTATE**

5120 S. Lakeland Drive, Suite 3
Lakeland, FL 33813

Phone: 863-648-1528 • Toll Free: 1-877-518 LAND

www.saundersrealestate.com

Lorida Country Estates Private Community



Situated in the center of the State of Florida, Highlands County is a place of spectacular, diverse landscapes including hills, lakes, palm trees, and orange groves.

Highlands County offers a wide spectrum of recreation opportunities including fishing, boating, skiing, sailing, and golfing, turning it into real paradise for both visitors and residents.

A beautiful mild climate invites all to enjoy outdoor recreation activities on a year-round basis and its central location—at the heart of the State of Florida—provides an easy access to all Florida's attractions.

***2 1/2 Hours from
Ft. Lauderdale and minutes
from Lake Placid***



Lake Placid, the hub of Highlands County, provides an easy access to the Orlando area, Florida's Gulf Coast (Tampa, Clearwater, Naples) and the Atlantic Coast (West Palm Beach, Fort Lauderdale, Miami)

www.loridacountryestates.com

Coldwell Banker Commercial Saunders Real Estate • Ph: 863.648.1528 • www.saundersrealestate.com

While every attempt is made to provide as accurate information on this property offering as possible, COLDWELL BANKER COMMERCIAL SAUNDERS REAL ESTATE (CBCSRE) does not guarantee the accuracy thereof. Buyer shall rely entirely on their own information and inspection of property and records. © Copyright Coldwell Banker Commercial Saunders Real Estate, All Rights Reserved, Worldwide: All content inclusive of text, graphics, images, and logos is the property of CBCSRE. You may not copy this material by any means (including electronic copies), reproduce, duplicate, scan, modify, publish, transfer, use on your own web site, distribute, or create a derivative work without receiving written permission from CBCSRE.

072307A-CT