



# **Dark Hammock**

**10,000-Acre Hunting Lease, Corporate & Family Retreat**

**Highlands County, Near Lake Placid, Florida**



# Dark Hammock

## 10,000-Acre Hunting Lease, Corporate & Family Retreat

### THE ENVIRONMENT

This property is “Old Florida” at its best and is extremely environmentally sensitive. Dark Hammock boasts a large diversity of wildlife, as well as ecological habitats and natural features. You will find Sand Hill Cranes gracefully grazing through open pastures, while gators and otters play in the intricate water system and natural wetlands throughout the 10,000 acres.

### HUNTER’S PARADISE

This property is a hunter’s paradise with an abundant and diverse game population that includes deer, turkey, hogs, quail, squirrels, and rabbits. Vast amounts of turkey and deer roam the beautiful Live Oak Hammocks, as well as the upland pine stands. For the duck hunter or fisherman, there is access to a large, 200-acre reservoir. The property also offers a game cleaning station, hunting stands, and feeders.







## THE HISTORY

Dark Hammock has a grand historic significance in the Florida cattlemen's heritage. It is known as the place where the "Dark Cowpens" and its ruins were located.

It was part of what was once the famed "Footman Trail." The Footman Trail passes through the entirety of the property.

In the pioneering days of the State of Florida, Florida Cattle Barons drove their cattle up Footman Trail and would rest their herd at Dark Cowpens (Dark Hammock) before nightfall. For the cattlemen of the time, Dark Hammock provided them the opportunity to feed and water their horses, rest, and get ready for the remainder of their journey. The next day, before they left to continue on the drive, federal and state inspectors would inspect the cattle brought to Dark Hammock. The cattle would be run through a dipping vat and were required to pass other inspections.

After the cattle were approved, the journey would continue to Arcadia, the nearest cattle market. In Arcadia, the cattle were loaded onto rail cars and would be shipped across the country, usually to the western states. If cows were demanded elsewhere, ships were appropriate for their transportation, especially to Cuba, which was a popular destination for cattle.

Since those early days at Dark Hammock, it seems like much has changed in this world, but the landscape and untouched natural resources of Dark Hammock have changed little.



# Dark Hammock

10,000-Acre Hunting Lease, Corporate & Family Retreat







## ABOUT THE PROPERTY

The property is what used to be known as, Dark Hammock. It is located west of Lake Placid and is part of the Blue Head Ranch.

The Dark Hammock 10,000+/- acre hunting/Corporate & Family Retreat lease is ready to use and provides a "turnkey" corporate or family retreat campus, complete with lodging and entertainment.

Lease Price: \$200,000 per year.

Dark Hammock Lease Property Facilities include:

- A beautiful 4,500 sq. ft. lodge
- Modern 2,000 sq. ft. guest house

The facilities provide lodging for approximately 25 guests, dining areas, game room, outdoor barbecue, skeet range, walk-in cooler, and game cleaning station. Personnel are in place to manage and maintain the facilities and to provide services such as, supplying feeders and hunting stands.

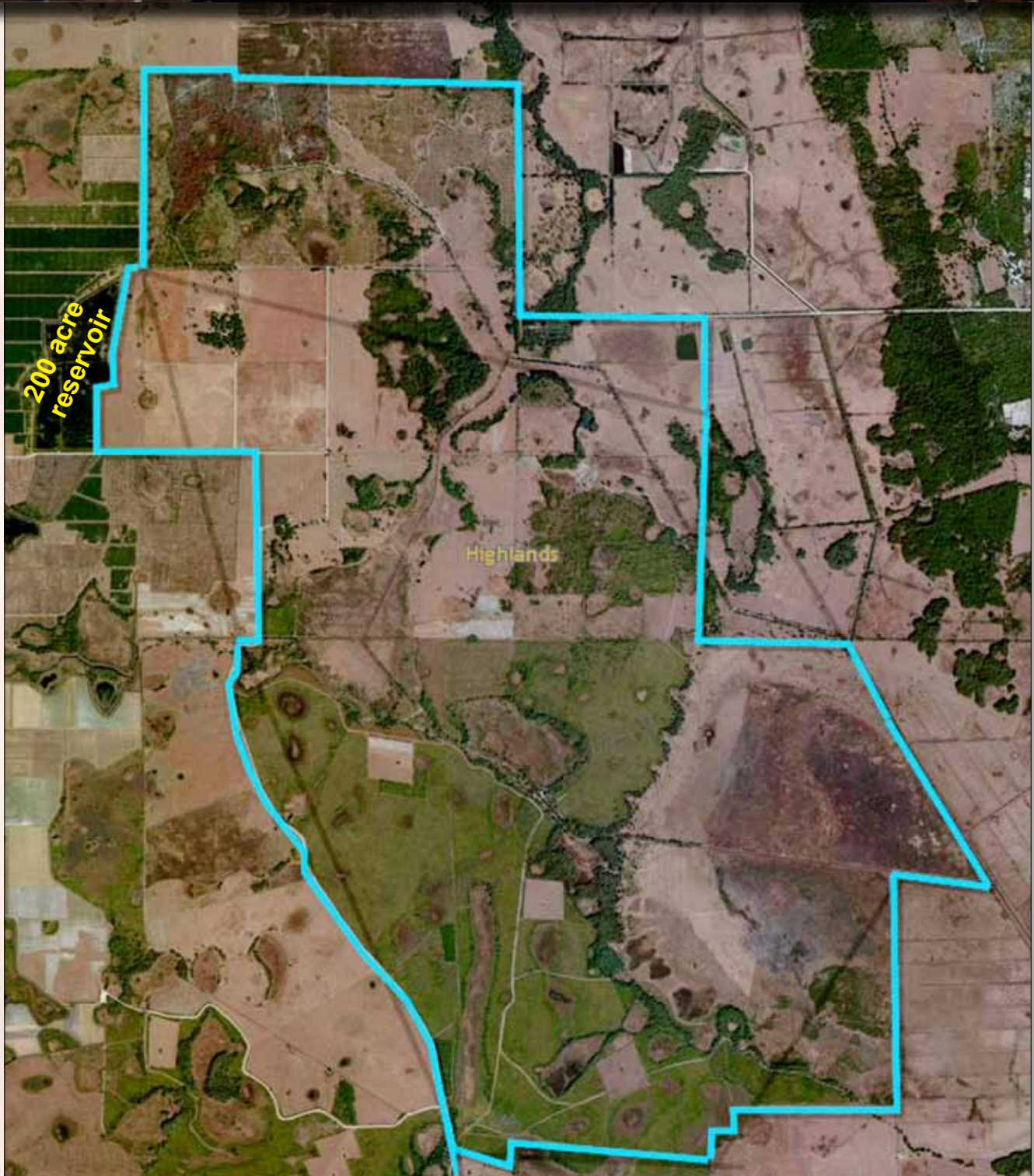
The land is currently used as a ranch and is surrounded by the remainder of Bluehead Ranch's 70,000 +/- acres in Highlands County.





# Dark Hammock

10,000-Acre Hunting Lease, Corporate & Family Retreat



**GPS Coordinates:** Lon: -081.50381 / Lat: 27.30333

**S.T.R.:** 20-36S-28E multiple sections

**Parcels include portions of:**

C203628A0000100000, C023728A0000300000, C19362801000B00000, 303628A0000100000





## Location Maps

- Located in Highlands County, FL
- South of HWY 66
- Approximately five miles to the west of The City of Lake Placid





# Dark Hammock

10,000-Acre Hunting Lease, Corporate & Family Retreat



**SAUNDERS**  
REAL ESTATE

114 North Tennessee Avenue, 3rd Floor  
Lakeland, FL 33801 / 863-648-1528  
[www.SaundersRealEstate.com](http://www.SaundersRealEstate.com)

©2011 Coldwell Real Estate Corporation. Coldwell Banker Commercial® is a registered trademark licensed to Coldwell Banker Real Estate Corporation. An Equal Opportunity Company. Each Office is Independently Owned And Operated. Every attempt is made accurate information on this property as possible, however, COLDWELL BANKER COMMERCIAL SAUNDERS REAL ESTATE (CBCSRE) does not guarantee the accuracy. Buyer should rely entirely on their own research, inspection of property, and records. ©2010 Coldwell Banker Commercial Saunders Real Estate, All Rights Reserved, Worldwide: All content is the property of CBCSRE. You may not copy or use this material by any means, in any form without written consent from CBCSRE.

101911A-JE/JC