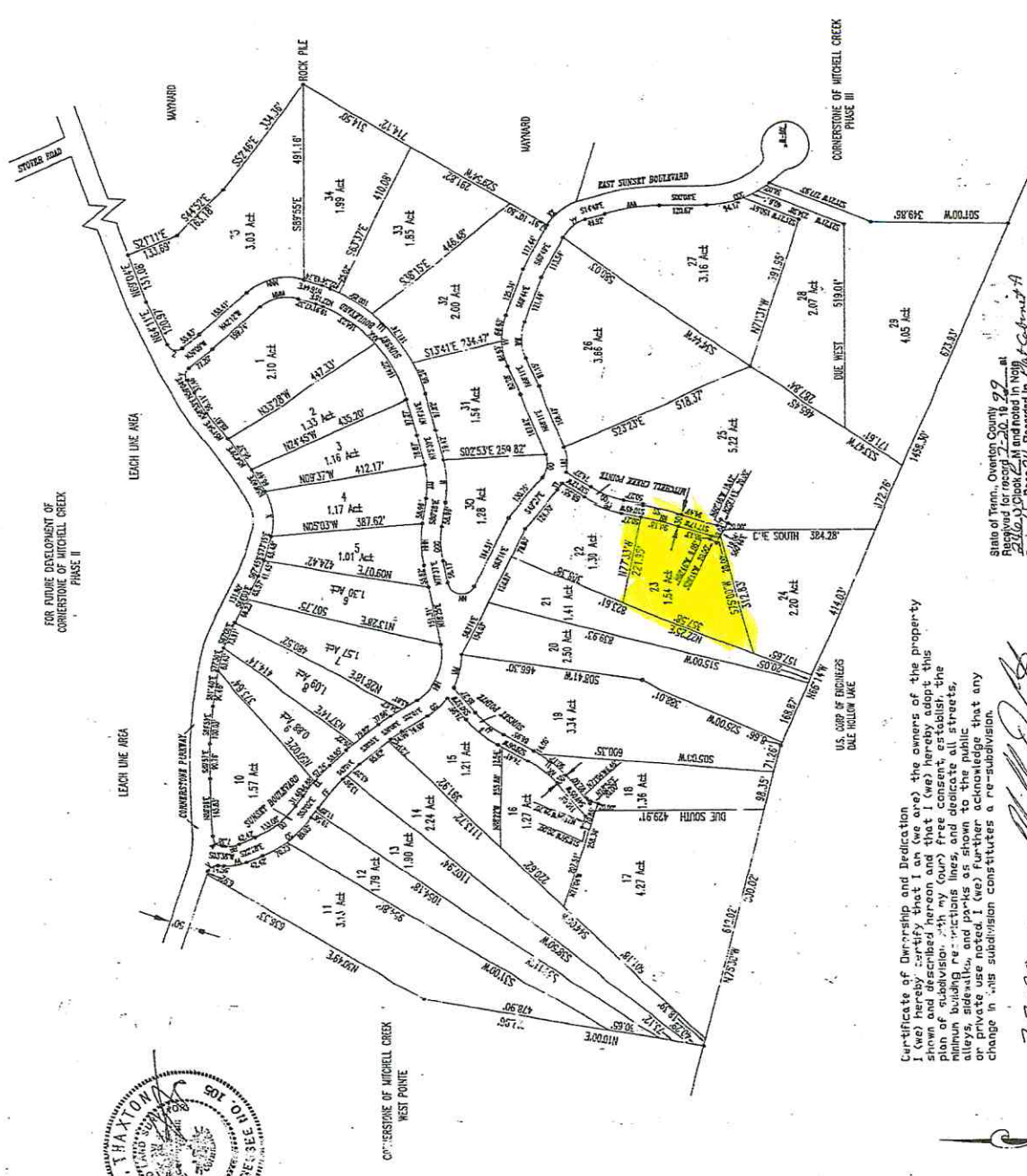




CHAIN	FOOT	INCH	FEET	DECI
1	25.00	31.83	7447	31.83
2	25.00	31.83	8478	31.83
3	25.00	31.83	4205	31.83
4	25.00	31.83	8171	31.83
5	25.00	31.83	4500	31.83
6	25.00	31.83	2876	31.83
7	25.00	31.83	8801	31.83
8	25.00	31.83	3176	31.83
9	25.00	31.83	3151	31.83
10	25.00	31.83	2159	31.83
11	25.00	31.83	1391	31.83
12	25.00	31.83	1033	31.83
13	25.00	31.83	1033	31.83
14	25.00	31.83	1033	31.83
15	25.00	31.83	1033	31.83
16	25.00	31.83	1033	31.83
17	25.00	31.83	1033	31.83
18	25.00	31.83	1033	31.83
19	25.00	31.83	1033	31.83
20	25.00	31.83	1033	31.83
21	25.00	31.83	1033	31.83
22	25.00	31.83	1033	31.83
23	25.00	31.83	1033	31.83
24	25.00	31.83	1033	31.83
25	25.00	31.83	1033	31.83
26	25.00	31.83	1033	31.83
27	25.00	31.83	1033	31.83
28	25.00	31.83	1033	31.83
29	25.00	31.83	1033	31.83
30	25.00	31.83	1033	31.83
31	25.00	31.83	1033	31.83
32	25.00	31.83	1033	31.83
33	25.00	31.83	1033	31.83
34	25.00	31.83	1033	31.83
35	25.00	31.83	1033	31.83
36	25.00	31.83	1033	31.83
37	25.00	31.83	1033	31.83
38	25.00	31.83	1033	31.83
39	25.00	31.83	1033	31.83
40	25.00	31.83	1033	31.83
41	25.00	31.83	1033	31.83
42	25.00	31.83	1033	31.83
43	25.00	31.83	1033	31.83
44	25.00	31.83	1033	31.83
45	25.00	31.83	1033	31.83
46	25.00	31.83	1033	31.83
47	25.00	31.83	1033	31.83
48	25.00	31.83	1033	31.83
49	25.00	31.83	1033	31.83
50	25.00	31.83	1033	31.83



FINAL PLAT  
FOR  
CORNERSTONE AT MITCHELL CREEK  
EAST POINTE

DEVELOPER	DAVID WILSON	SURVEYOR	Wagon Surveying
ADDRESS	225 Willow Grove Rd	ADDRESS	225 East Spring Street
	ALLONS, TN 38541		Cookeville, TN 38501
TELEPHONE	823-2500	TELEPHONE	(615) 526-4023
NOTE: THIS MAP IS AT ALL CORNERS UNLESS INDICATED OTHERWISE		ACRAGE SURVEYED	72.4±
NOTE: METHOD OF CLOSURE (33797, 33800R1)		NUMBER OF LOTS	35
		SCALE	1"=200' DATE: 6-23-99
DRAWING #	9868EAST B	TAX MAP	5, PARCEL 16

Certificate of Ownership and Dedication  
I, the undersigned, do hereby certify that I (we) hereby adopt this plan of subdivision, with my (our) free consent, establish, the minimum building regulations, and parks as shown to the public, alleys, sidewalks, and parks as shown to the public, and private use noted. I (we) further acknowledge that any change in this subdivision constitutes a re-subdivision.

7-7-99 Date Signed  
Owner's Signature  
13 July 99 Date Signed  
Owner's Signature

Certificate of Accuracy and Precision  
I hereby certify that the plan shown and described hereon is a true and correct class A survey, and the ratio of precision is as follows: 1/100,000. I further certify that the monuments and pins have been placed as shown hereon.

6-23-99 Date Signed  
Registered Land Surveyor  
Tennessee # 105

State of Tenn., Overton County No. 18, 99  
Recorded in Book 22, Page 211, and noted in Vol. 1, Page 152-2  
Book 22, Page 211, and noted in Vol. 1, Page 152-2  
State Tax Map No. 18, 99, Recording  
Fee \$100.00  
Register at Overton County Clerk's Office

Certificate of Approval of Streets and Drainage Systems  
I hereby certify that the streets, sidewalks, and other improvements shown on this plat are installed in an acceptable manner and according to required specifications or (2) a Financial Guarantee in the amount of \$\_\_\_\_\_ has been posted to assure completion of all required improvements in the case of default.

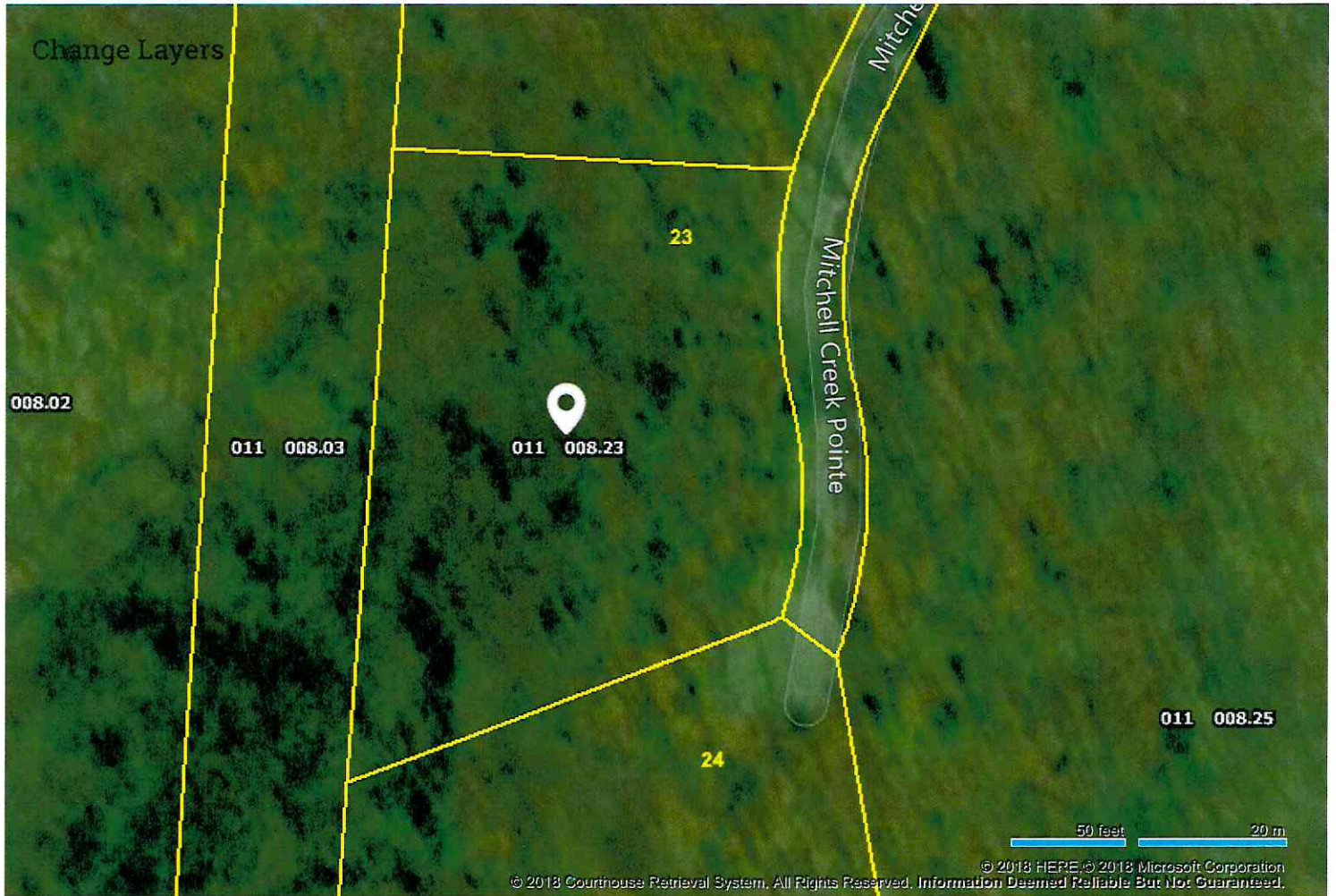
Date Signed  
Overton County Road Supervisor



Debra Dodd  
No. 1 Quality Realty  
931-397-1660  
debradodd@no1qualityrealty.com

Powered by  CRS Data

Map for Parcel Address: Michelle Creek Pt TN Parcel ID: 011 008.23



© 2018 Courthouse Retrieval System. All Rights Reserved.  
Information Deemed Reliable But Not Guaranteed.



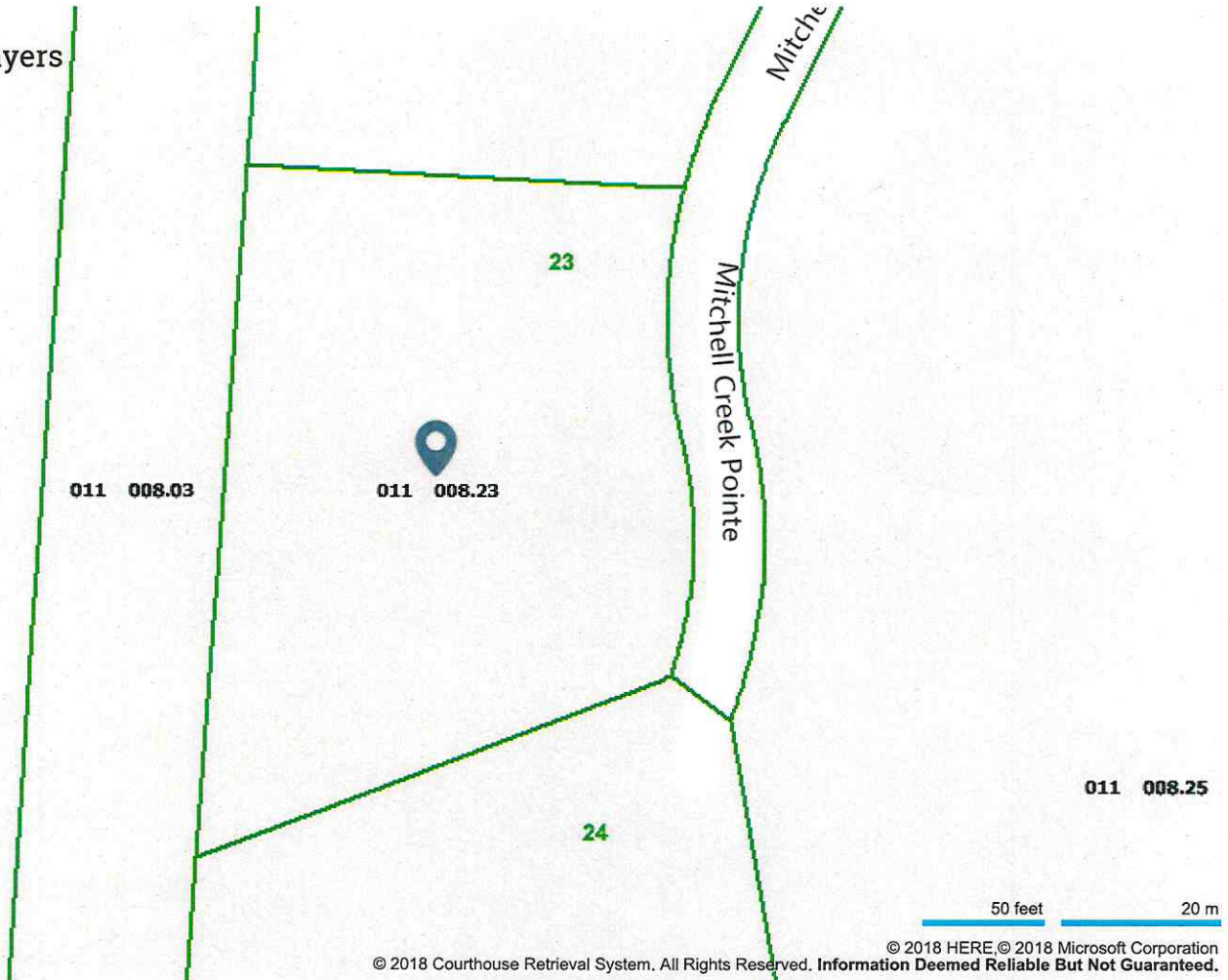
Debra Dodd  
No. 1 Quality Realty  
931-397-1660  
debradodd@no1qualityrealty.com



Map for Parcel Address: Michelle Creek Pt TN Parcel ID: 011 008.23

Change Layers

008.02



© 2018 Courthouse Retrieval System. All Rights Reserved. Information Deemed Reliable But Not Guaranteed.

© 2018 Courthouse Retrieval System. All Rights Reserved.  
Information Deemed Reliable But Not Guaranteed.



Debra Dodd  
No. 1 Quality Realty  
931-397-1660  
debradodd@no1qualityrealty.com



Map for Parcel Address: Michelle Creek Pt TN Parcel ID: 011 008.23



© 2018 Courthouse Retrieval System. All Rights Reserved. Information Deemed Reliable But Not Guaranteed.

© 2018 Courthouse Retrieval System. All Rights Reserved.  
Information Deemed Reliable But Not Guaranteed.